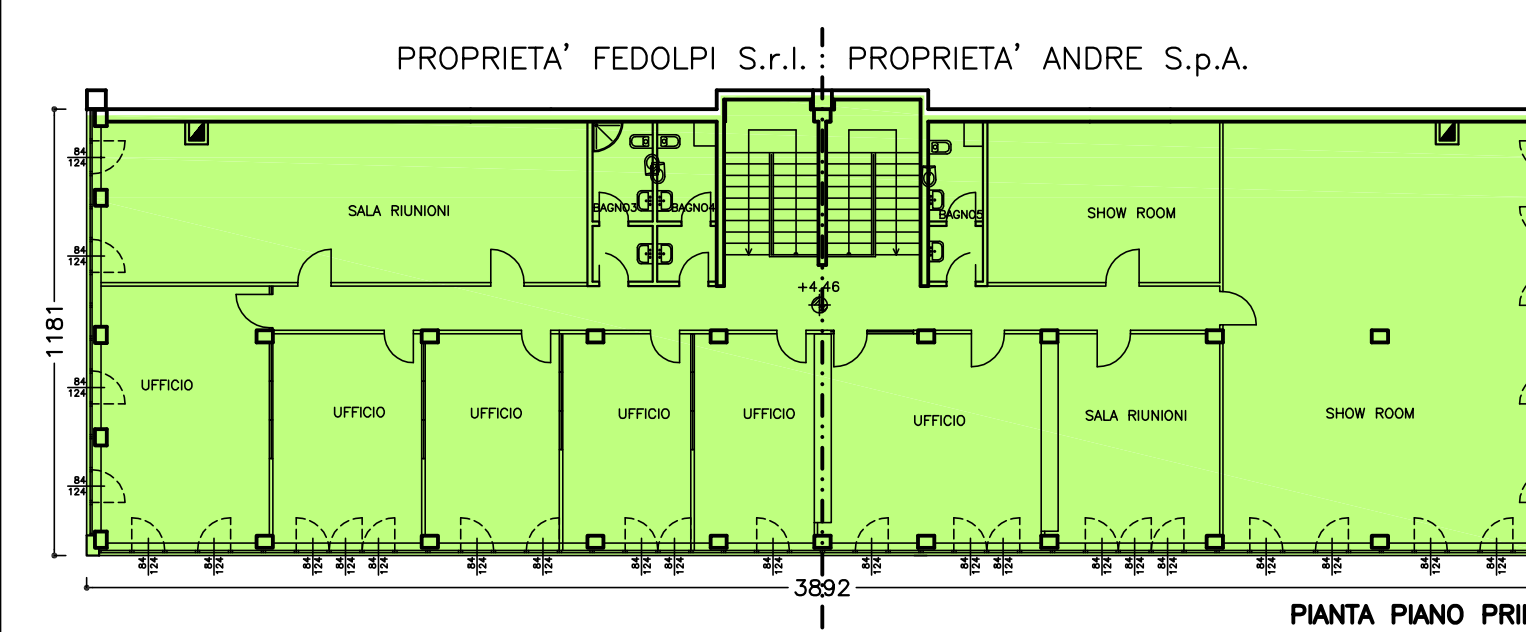


VISTA 1

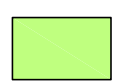



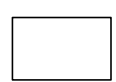


VISTA 2

LEGENDA  
 VISTA FOTOGRAFICA



LEGENDA

	S.L.P. UFFICI P.T./P.1'	mq. 912,00
	S.L.P. MAGAZZINO/ PIANI DI CARICO	mq.3558,00
	S.L.P. TOTALE:	mq.4470,00
	S.L.P. LOCALI TECNICI:	mq. 53,00
	S.L.P. CORTILE RETRO:	mq.346,00
	S.L.P. CORTILI CARRABILI:	mq.3.411,00